



Waste/ Recycling/ FOGO Guide

JULY 2023 - JUNE 2024



GLENORCHY
CITY COUNCIL

JULY 2023							AUGUST 2023							SEPTEMBER 2023							OCTOBER 2023							NOVEMBER 2023							DECEMBER 2023								
S	M	T	W	T	F	S	S	M	T	W	T	F	S	S	M	T	W	T	F	S	S	M	T	W	T	F	S	S	M	T	W	T	F	S	S	M	T	W	T	F	S		
30	31					1			1	2	3	4	5							1	2	1	2	3	4	5	6	7				1	2	3	4	31						1	2
2	3	4	5	6	7	8	6	7	8	9	10	11	12	3	4	5	6	7	8	9	8	9	10	11	12	13	14	5	6	7	8	9	10	11	3	4	5	6	7	8	9		
9	10	11	12	13	14	15	13	14	15	16	17	18	19	10	11	12	13	14	15	16	15	16	17	18	19	20	21	12	13	14	15	16	17	18	10	11	12	13	14	15	16		
16	17	18	19	20	21	22	20	21	22	23	24	25	26	17	18	19	20	21	22	23	22	23	24	25	26	27	28	19	20	21	22	23	24	25	17	18	19	20	21	22	23		
23	24	25	26	27	28	29	27	28	29	30	31			24	25	26	27	28	29	30	29	30	31					26	27	28	29	30			24	25	26	27	28	29	30		

JANUARY 2024							FEBRUARY 2024							MARCH 2024							APRIL 2024							MAY 2024							JUNE 2024							
S	M	T	W	T	F	S	S	M	T	W	T	F	S	S	M	T	W	T	F	S	S	M	T	W	T	F	S	S	M	T	W	T	F	S	S	M	T	W	T	F	S	
	1	2	3	4	5	6					1	2	3	31						1	2		1	2	3	4	5	6				1	2	3	4	30						1
7	8	9	10	11	12	13	4	5	6	7	8	9	10	3	4	5	6	7	8	9	7	8	9	10	11	12	13	5	6	7	8	9	10	11	2	3	4	5	6	7	8	
14	15	16	17	18	19	20	11	12	13	14	15	16	17	10	11	12	13	14	15	16	14	15	16	17	18	19	20	12	13	14	15	16	17	18	9	10	11	12	13	14	15	
21	22	23	24	25	26	27	18	19	20	21	22	23	24	17	18	19	20	21	22	23	21	22	23	24	25	26	27	19	20	21	22	23	24	25	16	17	18	19	20	21	22	
28	29	30	31				25	26	27	28	29			24	25	26	27	28	29	30	28	29	30					26	27	28	29	30	31		23	24	25	26	27	28	29	

WEEK 1 **WEEK 2** (Please refer to the back page.) Should public holidays occur on a weekday wheelie bin collection will take place as normal.
 Please Note: Christmas Day collection will be **SUNDAY 24th December 2023** - No Change to Easter 2024 collection.
 FOGO collection is the same day, opposite week to your waste and recycling

For more information call **(03) 6216 6800** or visit www.gcc.tas.gov.au or download the **Recycle Coach** phone app.

YOUR WASTE SERVICES

GENERAL WASTE

All residents have a **standard 140L dark green lid wheelie bin** to be used for collection of general household garbage each fortnight. For unit developments you may have a 240L Red Lid bin which will be shared and collected each week. To check your collection day, please use the map on the back page of this brochure.

Please observe these requirements to assist with your general waste collection:

- The bins are for domestic waste only. Do not put bricks, heavy timber or steel in the bin. These materials can damage the collection equipment.
- No paint, chemicals, liquids or motor oil.
- Bag all items, especially dust and loose materials to prevent jamming and avoid spillage during collections.

RECYCLING

All residents also have a **240L yellow lid wheelie bin** to be used for collection of recycling materials. Recycling collections occur on the same day as garbage collections, fortnightly for household bins. Unit developments with shared bins will be collected on a weekly basis. Read more about recycling on the yellow Recycling page.

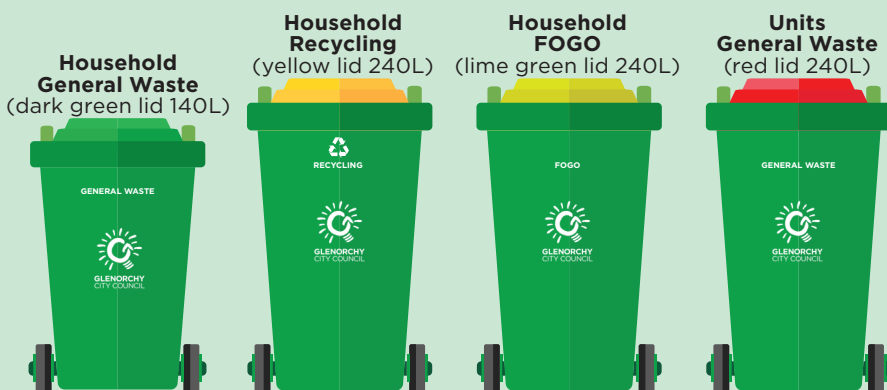
FOGO

Residents may also have a **240L lime green lid wheelie bin** for the collection of FOGO (Food Organics Garden Organics) collected fortnightly, and weekly for units with Shared wheelie bins. Read more about this on lime green FOGO page.

ADDITIONAL SERVICE

For Refuse bins only, there is an option to receive a weekly collection at a cost. Please contact Veolia directly on 03 6244 0000 for further information.

STANDARD SERVICES



BIN REPAIRS, REPLACEMENTS & NEW SERVICES

Bins will be delivered and repaired on Friday each week. Application Forms and Requests must be received by 2pm Thursday. For more information please contact Glenorchy City Council Customer Service on 03 6216 6800 or visit www.gcc.tas.gov.au.

DRIVER TO COLLECT

Please note that Glenorchy City Council provides a Driver to Collect service for some residents. Conditions apply, please contact Glenorchy City Council Customer Service on 03 6216 6800.

BIN AUDIT PROGRAM

Glenorchy City Council randomly check garbage/recycling/ FOGO bins for incorrect contents. If your bin has been stickered please remove the incorrect content and call Council's Customer Service to have the bin collected.

TIPS TO ENSURE YOUR BINS ARE COLLECTED

- Place your bin out for collection the night before or no later than 6am on collection day.
- Don't place your bin behind a parked car or other obstacle. Make sure there is a distance of at least 1 metre between your bins and any obstacles such as a pole or tree.
- Bins must face the road with handles facing your house.
- Don't overfill the bin. The lid should be fully closed. Max 70kg.
- Do not place rubbish beside or on top of the bin.
- Remove your bins from the kerb after collection within 48 hours.
- Number your bin lid to protect against loss or theft.
- Bins remain the property of Glenorchy City Council.
- Bins must remain at the allocated property and not removed.
- Don't put lawn clippings/garden waste or food waste into your garbage or recycling bins. Please use your FOGO bin

MISSED BINS
If your bin collection has been missed, please contact Glenorchy City Council Customer Service on 03 6216 6800.

GET THE APP
Download the **Recycle Coach** app, which will alert you to bin collection days and more.

YOUR WASTE SERVICES

KERBSIDE RECYCLING

For Households, recycling collections occur on the same day as garbage collections, fortnightly. Unit developments with shared bins will be collected on a weekly basis.

(Refer to map on back page.)

REMEMBER

- Ensure containers are clean and empty
- Loose items only - do not bag
- NO plastic bags or bin liners
- Remove lids

Please refer to the Councils Web Site, or download the Recycle Coach app if you are unsure.

If your bin is blown or knocked over, please pick up the contents and place back in your bin, to prevent it entering the stormwater system and causing litter in the street, then call Glenorchy City Council's Customer Service on 03 6216 6800 for the contractor to return to empty your bin. Council has **FREE** bin latches for Recycling Bins to help keep lids closed to prevent spillage.

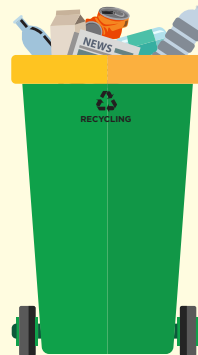
KERBSIDE RECYCLING TIPS

- Accidentally or carelessly mixing household waste into a recycling bin can make your recycling efforts a waste of time.
- Non-recyclables put into your recycling bin can contaminate an entire truck load of what could have been recycled but instead ends up in landfill.
- When it comes to recycling, if in doubt - leave it out! Better still find out yourself by visiting www.wastestartswithu.com.au or download the Recycle Coach app.
- By recycling, you help to look after the environment.
- Recycling reduces the amount of minerals dug up and trees cut down.
- Making products out of recyclable materials saves energy, reduces water use and cuts the amount of pollution and greenhouse gases we create.
- Purchase goods made from recycled material.

NO YOU CAN'T

Plastic bags	Whitegoods	Green waste
Nappies	China ware	Furniture
Polystyrene	Electrical goods	Car parts
Batteries	Clothes	Shoes
Wood	Old tools	Glass panes
String/rope	Paint/cleaners	Oil
Plastic film wrap	Coat hangers	Computers
Ceramics	Building materials	Rubber

For further information on recycling please refer to Councils WastestartswithU web site <https://wastestartswithu.com.au>



GET THE APP
Download the **Recycle Coach** app, which will tell you what you CAN and CAN'T recycle.

YES YOU CAN

GLASS
Bottle and jars
(lids removed)



PAPER
Newspaper, office paper and junk mail
(not shredded)



CARDBOARD
Milk cartons and boxes
(flattened)



PLASTIC
Juice and soft drink containers



METAL
Aluminium and Tin cans



KERBSIDE RECYCLING

JACKSON ST WASTE MANAGEMENT CENTRE

OPENING HOURS:

Monday-Friday 7:30am – 4:00pm

Saturday 9:00am – 4:00pm

Sunday 9:30am – 4:00pm

Closed Christmas Day and Good Friday

No domestic asbestos accepted after 2:30pm any day.

No commercial loads of waste accepted after 3:30pm weekdays.

Some of the potential environment and public health issues related to landfill include:

- Loss of resources
- Dust and odour issues
- Land availability
- Greenhouse gas emissions
- Water contamination
- Noise issues
- Litter

In windy and extreme weather conditions the landfill disposal area may be closed for access and safety reasons. You may be asked to wait in your vehicle for short periods of time for safety reasons when waste is being covered and compacted.

When using the landfill please follow the signs and any directions given by tollbooth or landfill staff. The landfill has designated areas for waste including green organics, tyres, whitegoods/metal, concrete and recyclables. Controlled waste by prior arrangement.

For further information and to check if the Landfill is closed please refer to Councils Landfill web site
<https://jacksonstlandfill.com.au>

JACKSON STREET LANDFILL DISPOSAL CHARGES 2023/24

All charges include Tasmanian Government Landfill Levy (unless stated below) of \$21.36 per tonne from 1st July 2023

WASTE TYPE	CHARGES
Minimum gate fee	\$15 per visit
Passenger tyres (Levy N/A)	\$11 each
Passenger tyres with rim (Levy N/A)	\$21 each
Light truck/4wd tyres (Levy N/A)	\$21 each
Light truck/4wd tyre with Rim (Levy N/A)	\$42 each
Clean fill (conditions apply)	\$52/tonne
Brick / Concrete / Rubble	\$107/tonne
Green waste/vegetation (Domestic)	\$106/tonne
Green waste/vegetation (Commercial)	\$128/tonne
General waste – domestic GCC residents * (cars and single axle trailers only) and Community Groups	\$122/tonne
General waste – domestic non-GCC residents	\$165/tonne
Mixed waste – commercial/industrial/demolition/construction	\$250/tonne
Metal (Levy N/A)	\$115/tonne
Domestic quantity of double wrapped asbestos (Levy N/A)	\$52 boot load \$104 small trailer load
Mattresses	\$26

* A driver's licence or valid ID will need to be shown to the tollbooth operator to receive the discounted general waste rate

THE DISCRETION OF THE TOLLBOOTH OPERATOR IS FINAL

waste management

It all comes back to U.



DOMESTIC ASBESTOS DISPOSAL AND SPECIAL BURIAL

Council NO longer accepts commercial disposal of Asbestos, Controlled Waste or Special Burial

The Jackson Street Landfill is licensed to accept domestic loads of asbestos

Packaging of all waste asbestos products must comply with the Work Health and Safety Regulations 2012 and should also adhere to the guidelines set out by Glenorchy City Council for domestic disposal.

These guidelines are available at www.jacksonstlandfill.com.au or by phoning toll booth 03 6216 6712 or customer service on 03 6216 6800.

Please note: Under NO circumstances should asbestos be placed in the Kerbside waste/recycling/FOGO bins.

For further information on asbestos in your home please contact WorkSafe Tasmania on 1300 366 322 or visit www.asbestosawareness.com.au

TASMANIAN GOVERNMENT LANDFILL LEVY

What is the Tasmania Government Landfill Levy?

The landfill levy is a Tasmanian Government fee placed on waste materials sent to landfill for disposal.

The levy was introduced on 1 July 2022 at an additional cost of \$20.00 per tonne at the gate. The levy is to encourage people to reduce waste and to re-use, repurpose or recycle materials instead of sending materials to landfill. Funds will be reinvested in resource recovery, recycling initiative and education across Tasmania. The introduction of a waste levy is a long-term approach to improving waste management and resource recovery in Tasmania. The Landfill Levy will increase to \$40.00 per tonne at the gate on 1st July 2024.

For more information on the state-wide levy please visit the Department of Natural Resources and Environment Tasmania (NRE) website:

<https://nre.tas.gov.au/environmental-management/waste-and-resource-recovery/landfill-levy-faqs>

JACKSON ST WASTE MANAGEMENT CENTRE

WHAT YOU CAN DO TO MAKE A DIFFERENCE

REDUCE YOUR WASTE GOING TO LANDFILL

- Try to choose items with the least amount of packaging.
- Try to choose items made from recycled material or items that can be recycled.
- Place food scraps into FOGO bin.
- Place a 'No Junk Mail' sticker on your letterbox.
- Give unwanted items to charities or hold a garage sale.
- Make lunches for work and school that contain no rubbish and only use recyclable or reusable containers.

SOFT PLASTIC DISPOSAL

Major supermarket chains are no longer able to accept or collect soft plastics due to the REDcycle scheme no longer being in operation.

Please DO NOT place soft plastics in your Recycling Bin, they cannot be recycled by the kerbside collection method.

Until a solution is found soft plastics are to be placed in your Waste wheelie bin.

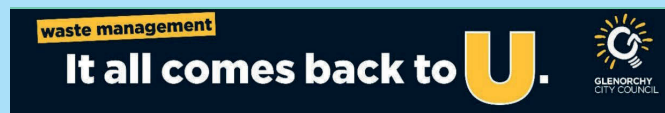
THE 5 R'S

REFUSE, REDUCE, REUSE, REPURPOSE, RECYCLE - Help make a Difference.

Adopting the 5 Rs helps conserve energy and natural resources. Using the 5 Rs can help to reduce pollution, reduce plastic and organic waste, and reduces the amount of waste going to landfill.

Please think about your options before discarding unwanted goods and waste. We cannot completely stop producing waste, but everyone can help to reduce it.

Waste starts with U and ends with all of US



FREE RECYCLING CENTRE

Glenorchy's Recycling Centre provides a convenient facility for the disposal of recyclables and is located at the Jackson Street Waste Management Centre, Glenorchy.

Items accepted:

- Glass (bottles and jars)
- Paper (newspaper and magazines)
- Cardboard (milk cartons and boxes)
- Plastic (juice and soft drink bottles)
- Aluminium and steel cans

Household Hazardous Waste Facility accepts: vehicle batteries, paint, gas bottles and motor oil.

All goods are the property of the Glenorchy City Council.

OPERATING HOURS:

Monday - Friday 7:30am - 4:00pm
Saturday 9:00am - 4:00pm
Sunday 9:30am - 4:00pm.

The facility is closed Good Friday and Christmas Day.

For more information please contact Glenorchy City Council Customer Service on 03 6216 6800.



PUBLIC LITTER BINS

There are 300 public litter waste bins throughout Glenorchy, including at sports grounds, parks and reserves, shopping centres, bus stops and main roads. These are either 60L pole-mounted bins or 140L red or silver top bins.

Council provides yellow top recycling bins along the Main Rd in Glenorchy and at the front of the Council Chambers. Managing litter is everyone's responsibility. Not only is it unsightly and costly, it can end up in our stormwater systems, streams, rivers and oceans, harming the local fauna and flora.

To help reduce the impact of litter, we can make better choices about the type of packaging we buy, how we dispose of rubbish and what action we take upon witnessing illegal dumping.

If you see anyone littering please do the right thing and contact the Tasmanian Litter hotline on **1300 135 513** or visit rubbish.epa.tas.gov.au All enquiries regarding Council litter bins please contact Glenorchy City Council Customer Service **03 6216 6800**



waste management **It all comes back to U.**



WHAT YOU CAN DO TO MAKE A DIFFERENCE

FOGO (FOOD ORGANICS GARDEN ORGANICS)

Glenorchy City Council provides a fortnightly FOGO (Food Organics Garden Organics) kerbside collection service. The FOGO wheelie bin has a lime green lid and is collected on the **same day but opposite week** to your waste/recycling collection. If you live in a unit development that shares wheelie bins, your FOGO is collected weekly on Tuesdays.

WHY FOGO ?

The FOGO service greatly reduces the amount of organic waste going into landfills, where it produces greenhouse gases and toxic liquid called 'leachate' as it decomposes. On 1st July 2022 the Tasmania Government introduced a state wide Landfill Levy - FOGO reduces the total amount of waste going to landfill and will help save all stakeholders these costs.

FOGO is a convenient and environmentally friendly way to dispose of all food scraps and any garden waste. FOGO waste is treated by an Industrial Composter using an EPA tested, Australian Standard process that turns it into healthy, safe compost for use by farmers and gardeners.

For further information please refer to Councils WastestartswithU web site <https://wastestartswithu.com.au>

✗ NO YOU CAN'T

PLASTICS (NO plastic bags not even biodegradable) this means no

- Plastics
- Nappies
- Fabric (e.g. clothing)
- Hard waste or broken household items
- Plastic take-away containers
- Hazardous or contaminated waste
- Thick branches
- Nothing that is currently allowed to go in your recycling bin.



✓ YES YOU CAN

COOKED AND RAW MEAT
Vegetables, seafood, dairy, meat and bones (cooked or raw), teabags, coffee grounds, egg shells



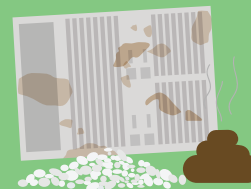
GARDEN WASTE
Grass clippings, leaves, bark, twigs and weeds



PAPER
Shredded paper, paper towels, paper napkins and tissues



ANIMAL WASTE
Cat and dog poo, organic kitty litter and soiled paper from bird cages



PERSONAL CUTTINGS
Hair, nails clippings and pet hair



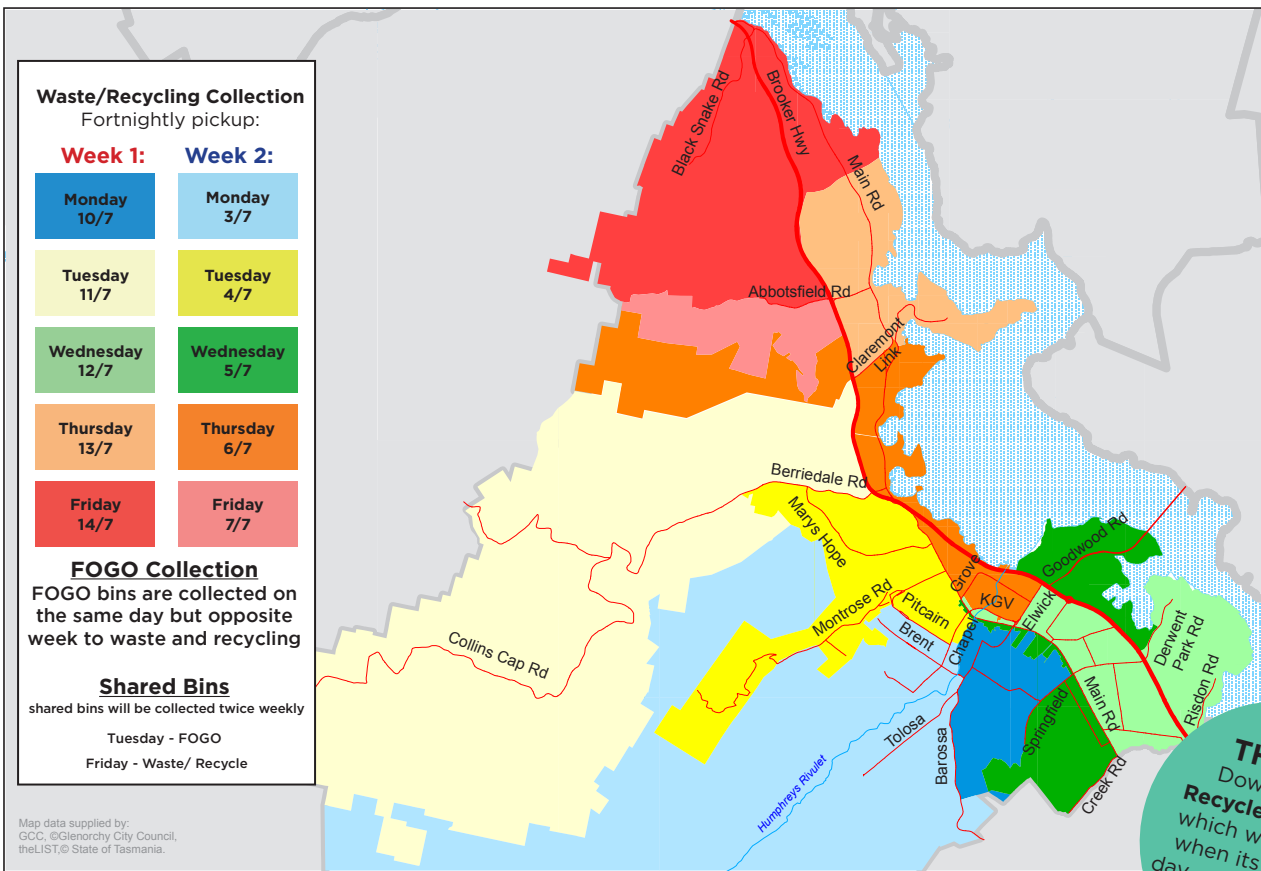
HOW TO FOGO

Glenorchy City Council provides a **FOGO Tip Sheet** that will make FOGO separation quick, easy and clean - this can be downloaded from our waste website www.wastestartswithu.com.au, where you can also find a long list of items that can go in a FOGO bin.

WHAT KIND OF BIN BAGS CAN I USE?

If you want to put bags in the FOGO caddy or bin, they must be compostable. Biodegradable and plastic bags should NOT be used, as these can break down into smaller fragments of plastic. As alternative, line your bin with newspaper or paper towel.

Any questions please call Glenorchy City Council's Customer Service on 03 6216 6800. or visit www.gcc.tas.gov.au/waste



GET THE APP
Download the **Recycle Coach** app which will alert you when its collection day, and tell you what you can and can't recycle!

Please refer to calendar on front page for collection week

Glenorchy City Council, 374 Main Road Glenorchy | (03) 6216 6800 | E gccmail@gcc.tas.gov.au
www.wastestartswithu.com.au | www.gcc.tas.gov.au