

Let's talk, Glenorchy

Have your say!



Community Engagement Update - June/July

Glenorchy City Council is committed to engaging with its communities on issues that affect you. We will take into account your opinions, ideas and feedback when making decisions or delivering services.

Let's Talk, Glenorchy

Council is committed to working with its local communities and stakeholders to understand the needs and aspirations of our diverse communities. To achieve this, Council delivers a variety of Community Engagement activities and events.



Community engagement is the *exchange of information*.

Engagement provides the opportunity for the community to have a say and contribute to the decisions and actions of Council, to solve common problems, deliver services or make decisions.

Community Engagement leads to better outcomes for all!

Upcoming Events

Community Yarns

An opportunity for you to attend a facilitated session to talk to the Mayor, Aldermen and Council staff about priorities for your local area.

- Tuesday, 19 July—Goodwood Community Centre, 5.30-6.30pm

RSVP

Please email letstalk@gcc.tas.gov.au or call 6216 6800 to RSVP.

Pop-Ups

A casual opportunity to chat with Aldermen and Council staff.

- Friday, 15 July — Northgate Shopping Centre, 11am-2pm

Community Yarns

In 2022 Council has held Community Yarns and Pop-Up events in Glenorchy, Collinsvale, Claremont, and Moonah.

We've connected with over 150 people at these community engagement events and we've listened to your thoughts on where you live and what you think.

You can access the meeting notes and activity summaries from any of our yarns at letstalk.gcc.tas.gov.au or by calling Council on 6261 6800.

374 Main Road, Glenorchy
PO Box 103, Glenorchy TAS 7010
(03) 6216 6800 | letstalk@gcc.tas.gov.au
www.letstalk.gcc.tas.gov.au



Let's talk, Glenorchy

Completed Projects

Food Van Policy

At the June Council meeting, Aldermen endorsed the Mobile Food Business Policy providing for mobile food vans on Council owned land.

Some pre-approved locations have been identified, and the General Manager has been authorised to approve food van locations connected to the policy given they are subject to change and may require Planning Permits.

Work will now commence on seeking these Planning Permits, and the Policy will be released for use once Planning Permits have been granted.

Footpath Trading Policy and Guidelines

At its June meeting, Council endorsed a new Footpath Trading Policy providing regulations and a permit process for outdoor dining on footpaths and also for parklets, recognising the vibrancy outdoor dining brings to CBD areas. The policy also provides guidelines for A-Frame signage on footpaths.

Nature Strip Policy

The new Nature Strip Policy was also endorsed, which will enable Glenorchy residents to landscape their nature strips. The policy what activities can be undertaken with and without a permit and provides a guide to preferred plants for nature strips.

For more information on any of Council's previous projects visit

letstalk.gcc.tas.gov.au

or call 6216 6800

Glenorchy City Council Adopts 2022/23 Budget

Council formally adopted its budget estimates and Annual Plan for the 2022/23 financial year at a special council meeting held on Monday, 20 June.

The budget and Annual Plan take a 'back to basics' approach, with a focus on affordability and responsibility.

The budget sets out a \$31.5m capital works program, which delivers on Council's commitment to deliver federally funded sport and recreation projects, while also renewing and upgrading its \$1 billion asset portfolio.

Council's 2022/23 capital works program includes:

- \$3.5m for a new regional playground at Giblins Reserve, Goodwood
- \$435,000 on Road Safety Improvements, including \$205,000 to install a safety barrier and resurface parts of Glenlusk and Molesworth roads
- \$9.6 million in new and upgraded football (soccer) facilities at KGV (3.8m) and North Chigwell Oval (\$5.4m), funded primarily through federal government grants
- \$3m for Stage A of the Tolosa Reservoir Reintegration Project, preparing the former Tolosa Reservoir for future transformation into an iconic regional parkland, and
- \$11.8 million in renewing, upgrading and maintaining our transport (roads and footpaths), stormwater and property assets, to ensure their long-term viability and reduce future maintenance costs.



You might also be interested in...

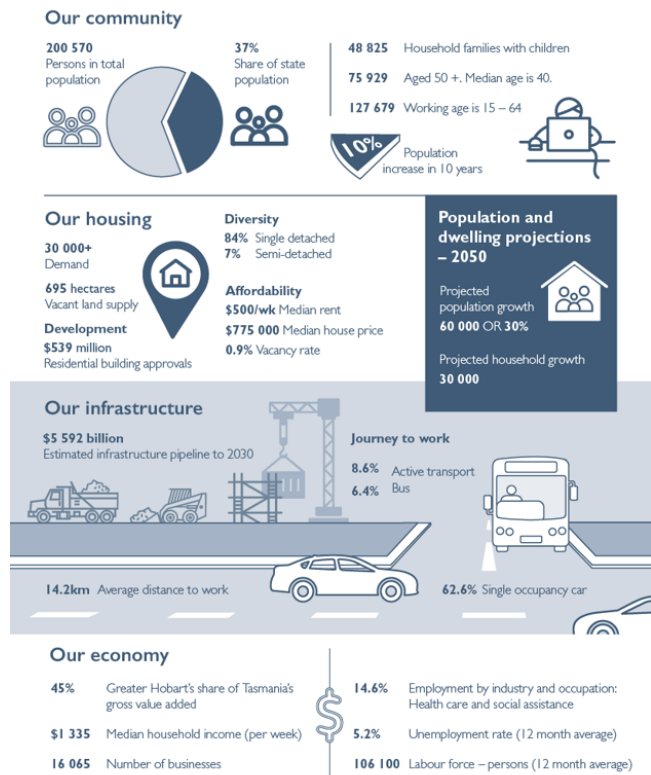
Greater Hobart Plan

The Greater Hobart Plan is open for public consultation - make sure you have your say!

This Plan is the first time that transport, housing and precinct planning have been brought together in spatially integrated manner.

This will allow for better planning for business and employment growth, recreation, and environmental management, protect farmland and for climate change.

For more information visit letstalk.gcc.tas.gov.au



Local councils and communities working together to avoid landfill waste.

Ask us about the many recycling, re-use, resource recovery and repair services available.

- E-WASTE
- GREEN WASTE
- PAINT
- SCRAP METAL
- TYRES
- SOFT PLASTICS
- OIL

RECYCLE AT COUNCILS, RETAILERS AND OTHER BUSINESSES

- RE-USE
- RECOVER / REPAIR

& MANY MORE

Let's avoid, reduce, re-use, and recycle to minimise landfill fees.

State Government Landfill Levy

The landfill levy is a state government fee placed on waste materials sent to landfill for disposal.

This levy is planned to start on 1 July 2022 at an additional cost of \$20 per tonne at the gate.

The objective in applying this levy is to reduce the amount of waste going to landfill, which will benefit the environment and create economic benefits by keeping the resources that can be recovered from waste circulating in the productive economy.

For more information visit letstalk.gcc.tas.gov.au



Find out about upcoming Land Disposals

From time to time Council investigates the disposal of Council land that is not required for community use or Council's operational requirements. Council may also lease land to another organisation who may be better suited to ensuring the land is well used and providing benefit to our community.

If you are interested, information on proposed land disposals will be posted on [Council's website](#). Make sure you have your say.



REFERENCE GROUP
Connecting with Community

Council has various [reference groups](#) who meet regularly to focus on specific issues. Participating gives you a chance to make a difference.

We currently have vacancies on the following reference groups:

- Healthy Communities
- Access and Inclusion
- Safer Communities
- Arts and Culture

If you can't join a group but want to contribute, there are still opportunities to attend individual reference group meetings or workshops on topics that interest you.

Glenorchy Matters Community Panel

Would you like to have the opportunity to express your views on a range of Council issues? Why not join the Glenorchy Matters Community Panel.

Panel members are provided updates on projects and invited to share their perspectives through surveys and other activities. Your feedback will help Council understand the different community views on a wide range of topics, building a clearer understanding of our community's needs and aspirations.

You don't need to have regular access to email or internet – information is posted to you. Find out how to become a member by calling us on 6216 6800 and asking to speak to Council's Community Engagement Officer.

For more information and to have your say:

- Council's website: gcc.tas.gov.au
- Let's Talk, Glenorchy website: letstalk.gcc.tas.gov.au
- Hard copy surveys are available at Council's Customer Service
- Call on 6216 6800 and ask to speak with Council's Community Engagement Officer
- Visit us at 374 Main Road, Glenorchy. Opening hours Mon-Fri 8:30am-5pm

374 Main Road, Glenorchy
PO Box 103, Glenorchy TAS 7010

(03) 6216 6800 | letstalk@gcc.tas.gov.au

www.letstalk.gcc.tas.gov.au